

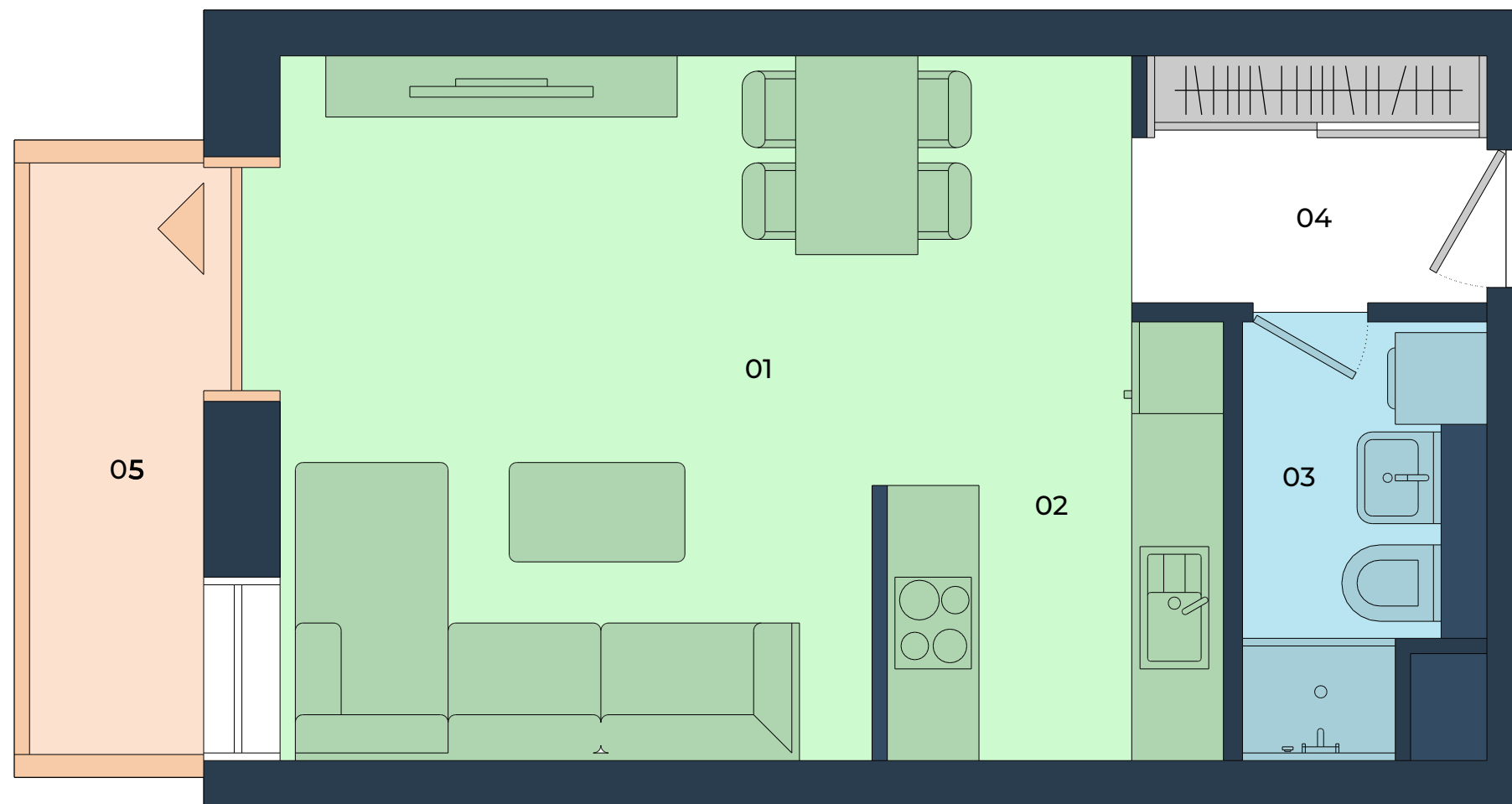


# FIUMEI

## RESIDENCE

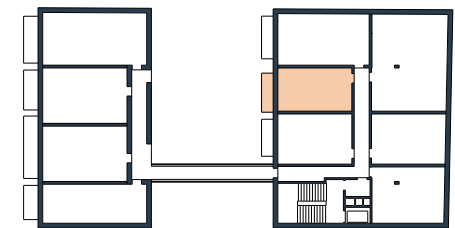
### 606 1 ROOM FLAT

01 Living Room	19,65 m <sup>2</sup>
02 Kitchen	7,01m <sup>2</sup>
03 Bathroom	3,69 m <sup>2</sup>
04 Lobby	4,63 m <sup>2</sup>
<b>Interior</b>	<b>34,98 m2</b>
05 Balcony	4,80 m <sup>2</sup>
<b>Exterior</b>	<b>4,80 m2</b>
<b>Total Area</b>	<b>39,78m2</b>



B BUILDING

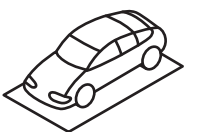
6. FLOOR



### OPTION TO BUY



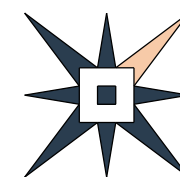
STORAGE  
AREA



PARKING  
GARAGE

+36 20 964 5441

info@fiumeiresidence.hu  
www.fiumeiresidence.hu



The layout is subject to change and modification. The furnishings and equipment of the apartment are only illustrative, they are not part of the delivery of the apartment. The stated dimensions are preliminary and may not correspond to the implementation project. The sales area of the apartment includes the area of internal partitions, balcony, loggia, or terrace.