



FIUMEI

RESIDENCE

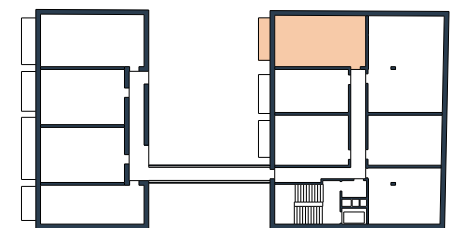
305 2 ROOM FLAT

01 Living Room	20,7 m ²
02 Kitchen	8,2 m ²
03 Master Bedroom	13,5 m ²
04 Bathroom	3,6 m ²
05 WC	1,6 m ²
06 Lobby	3,6 m ²
Interior	51,0 m²
07 Balcony	5,8 m ²
Exterior	5,8 m²
Total Area	56,8 m²



B BUILDING

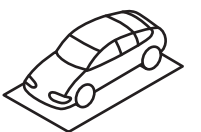
3. FLOOR



OPTION TO BUY



STORAGE
AREA



PARKING
GARAGE

+36 20 285 1506

info@fiumeiresidence.hu
www.fiumeiresidence.hu



The layout is subject to change and modification. The furnishings and equipment of the apartment are only illustrative, they are not part of the delivery of the apartment. The stated dimensions are preliminary and may not correspond to the implementation project. The sales area of the apartment includes the area of internal partitions, balcony, loggia, or terrace.