



# FIUMEI RESIDENCE

## 701 4 ROOM FLAT

01 Living Room	30,5 m <sup>2</sup>
02 Kitchen	6,3 m <sup>2</sup>
03 Master Bedroom	12,9 m <sup>2</sup>
04 Bedroom	9,7 m <sup>2</sup>
05 Bedroom	10,6 m <sup>2</sup>
06 Bathroom	5,1 m <sup>2</sup>
07 WC	2,1 m <sup>2</sup>
08 WC	2,2 m <sup>2</sup>
09 Lobby	4,0 m <sup>2</sup>
10 Corridor	5,5 m <sup>2</sup>
11 Roof Garden	1,5 m <sup>2</sup>
<b>Interior</b>	<b>90,5 m<sup>2</sup></b>
12 Balcony	17,0 m <sup>2</sup>
13 Roof Garden	26,3 m <sup>2</sup>
<b>Exterior</b>	<b>43,3 m<sup>2</sup></b>
<b>Total Area</b>	<b>133,8 m<sup>2</sup></b>

+36 20 285 1506

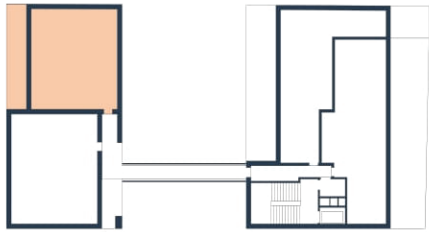
info@fiumeiresidence.hu  
www.fiumeiresidence.hu



Roof Garden details in layout 801

A BUILDING

7. FLOOR



### OPTION TO BUY



STORAGE  
AREA



PARKING  
GARAGE

The layout is subject to change and modification. The furnishings and equipment of the apartment are only illustrative, they are not part of the delivery of the apartment. The stated dimensions are preliminary and may not correspond to the implementation project. The sales area of the apartment includes the area of internal partitions, balcony, loggia, or terrace.



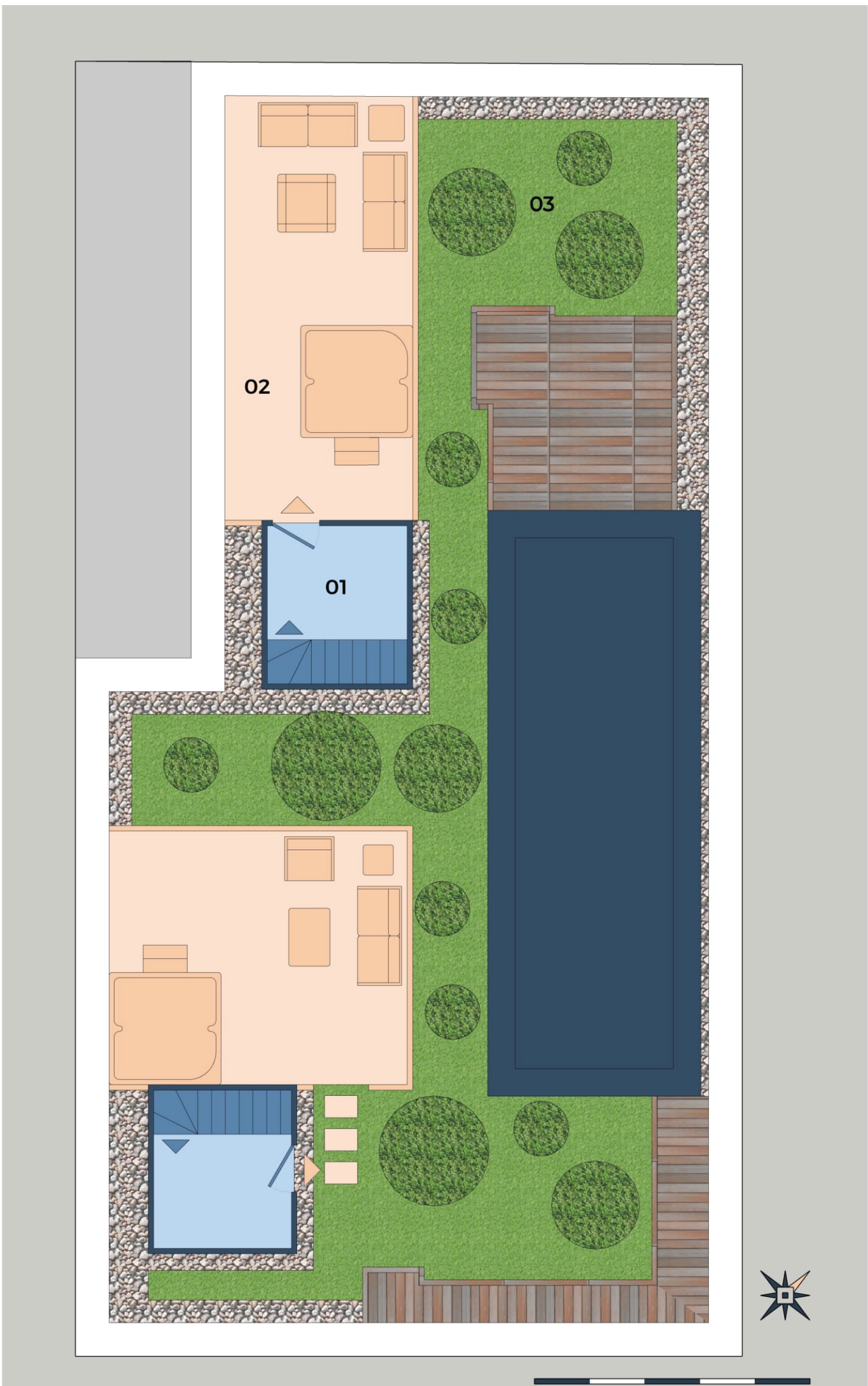
# FIUMEI RESIDENCE

## 801 ROOF GARDEN

<b>Roofed Area</b>	<b>8,4 m<sup>2</sup></b>
<b>Exterior</b>	<b>26,3 m<sup>2</sup></b>
<b>Exclusive Use Garden Area</b>	<b>28,9 m<sup>2</sup></b>
<b>Total Area</b>	<b>63,6 m<sup>2</sup></b>

+36 20 285 1506

info@fiumeiresidence.hu  
www.fiumeiresidence.hu

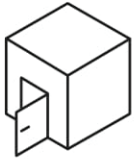


A BUILDING

8. FLOOR



### OPTION TO BUY



STORAGE  
AREA



PARKING  
GARAGE

The layout is subject to change and modification. The furnishings and equipment of the apartment are only illustrative, they are not part of the delivery of the apartment. The stated dimensions are preliminary and may not correspond to the implementation project. The sales area of the apartment includes the area of internal partitions, balcony, loggia, or terrace.