



FIUMEI

RESIDENCE

702 4 ROOM FLAT

01 Living Room	28,5 m ²
02 Kitchen	8,8 m ²
03 Master Bedroom	16,7 m ²
04 Bedroom	9,3 m ²
05 Bedroom	9,4 m ²
06 Bathroom	7,0 m ²
07 WC	2,2 m ²
08 Bathroom	4,0 m ²
09 Lobby	5,7 m ²
10 Corridor	7,6 m ²
11 Roof Garden	1,5 m ²

Interior 100,8 m²

12 Balcony	9,5 m ²
13 Roof Garden	34,3 m ²

Exterior 43,8 m²

Total Area 144,6 m²

+36 20 285 1506

info@fiumeiresidence.hu
www.fiumeiresidence.hu

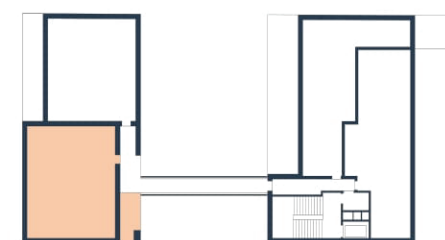


Roof Garden details in layout 802



A BUILDING

7. FLOOR



OPTION TO BUY



STORAGE
AREA



PARKING
GARAGE

The layout is subject to change and modification. The furnishings and equipment of the apartment are only illustrative, they are not part of the delivery of the apartment. The stated dimensions are preliminary and may not correspond to the implementation project. The sales area of the apartment includes the area of internal partitions, balcony, loggia, or terrace.



FIUMEI

RESIDENCE

802 ROOF GARDEN

Roofed Area 8,4 m²

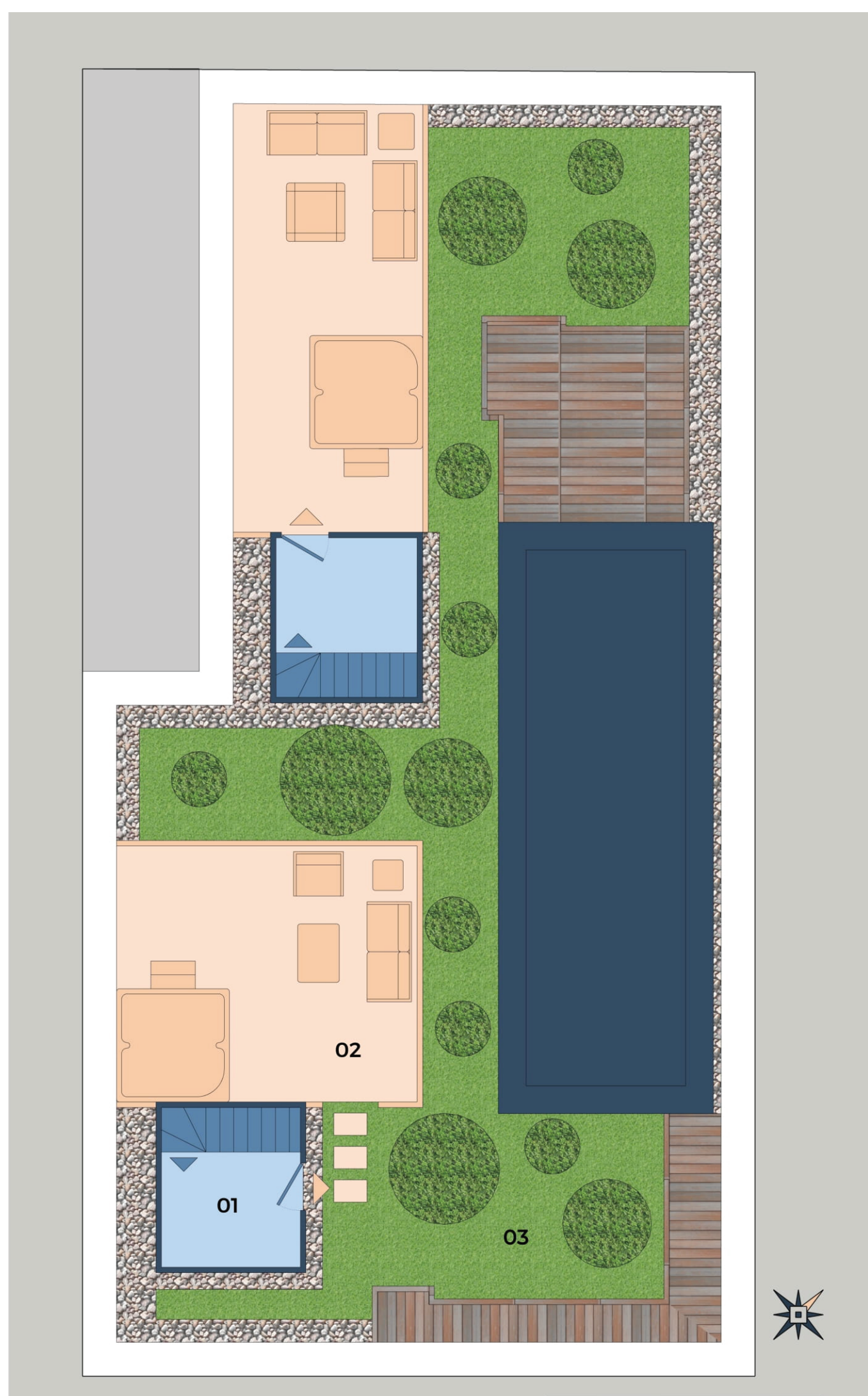
Exterior 34,3 m²

**Exclusive Use
Garden Area 52,2 m²**

Total Area 94,9 m²

+36 20 285 1506

info@fiumeiresidence.hu
www.fiumeiresidence.hu



A BUILDING

8. FLOOR



OPTION TO BUY



STORAGE
AREA



PARKING
GARAGE

The layout is subject to change and modification. The furnishings and equipment of the apartment are only illustrative, they are not part of the delivery of the apartment. The stated dimensions are preliminary and may not correspond to the implementation project. The sales area of the apartment includes the area of internal partitions, balcony, loggia, or terrace.